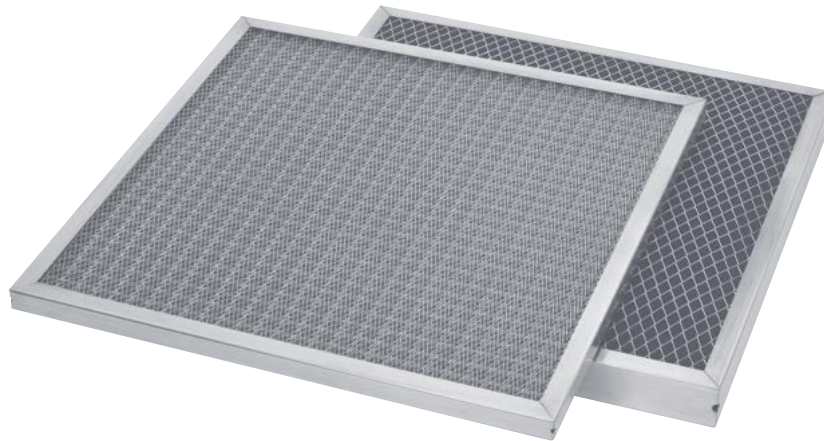


HF SERIES

TWO-STAGE FOAM & ALUMINUM FILTER



FILTERS AIRBORNE PARTICULATE



Application: The HF series two-stage foam & aluminum filter is an impingement type panel filter designed to replace disposable air filters commonly used in residential, commercial and industrial HVAC applications to remove airborne particulate and coolant mist from the airstream. Placing a washable foam pad behind an aluminum mesh pre-filter creates the unique two-stage filtration system offering greater arrestance and efficiency over the traditional, all-metal washable filter. Popular applications include computers and many indoor and outdoor electronic equipment requiring dust particle filtration to protect sensitive hardware and software. The HF Filter is ideal for vents of machines and air cleaners that require a permanent dust filtration solution.

Construction: The HF Series filter uses an aluminum frame to enclose the media pack. The first stage of the media pack is an expanded aluminum grid, corrugated to increase its available surface area, followed by one or two more layers of corrugated aluminum screen wire. These components are assembled in a cross-cross fashion for strength and service to remove large airborne particulate. The second stage is made of 25 pores per inch (ppi) filter foam which removes smaller airborne particulate. The entire media pack is backed by an expanded aluminum support grid on the air-exit side of the filter. The frame is made with mitered corners and is secured with pop-rivet(s). The frame has drain holes in three corners.

Filter Cleaning and Coating

1. To clean a dirty filter, rinse it with a moderate-to-heavy stream of warm water. High-powered steam cleaning or chemical dips are unnecessary and not recommended.
2. The HF Series filter is not supplied from the factory with filter adhesive coating. If desired, it may be sprayed before installation with Filter Coat, a water soluble adhesive and detergent. AMFCO does not sell Filter Coat nor any adhesive.

Due to continuing research and development, we reserve the right to make modifications to any product.

AVAILABLE IN ONE ALLOY

HFA

Aluminum

PRODUCT HIGHLIGHTS

- Two-Stage Progressive-Density Design
- 25 ppi Filter Foam for Greater Arrestance and Efficiency
- Ideal dust particulate filter for electronics
- Washable and Reusable
- Corner Drain Holes

FAST FACTS

MINIMUM ORDER:
No Minimum Order

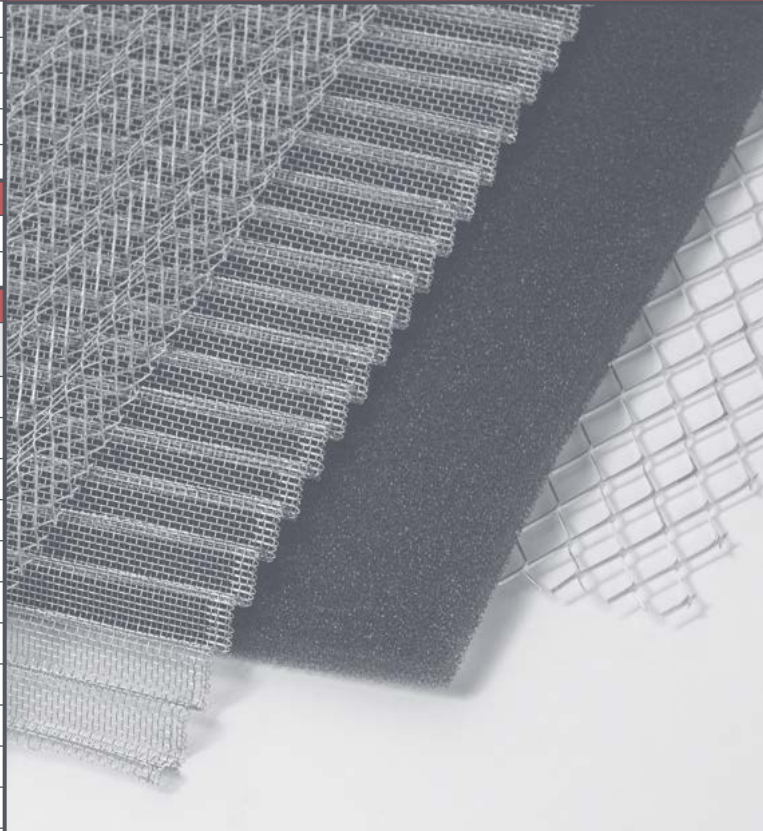
SIZING OPTIONS:
Standard and Special Sizes Available
(See reverse side for details.)

CLASSIFICATION:
UL Classified 900

MAX TEMP:
250 Degrees F

HF SERIES ~ Filter Selection Chart

MODEL	HFA		
CONSTRUCTION			
Frame Alloy	.030" aluminum		
Frame Thickness	1/2" exact; nominal* 1" and 2"		
Primary Stage Media	Expanded aluminum and screen wire		
Secondary Stage Media	25 ppi filter foam		
Backing Grid	Expanded aluminum		
APPLICATION			
Application	Airborne particulate		
Max Operating Temperature	250°		
STANDARD SIZES			
Nominal* Dimensions (H x W x T)	Part Number	Carton Quantity	Carton Weight
12 x 24 x 1	HFA101224	12	16.0
16 x 20 x 1	HFA101620	12	17.0
16 x 25 x 1	HFA101625	12	20.0
20 x 20 x 1	HFA102020	12	20.0
20 x 25 x 1	HFA102025	12	24.0
24 x 24 x 1	HFA102424	12	27.0
12 x 24 x 2	HFA201224	12	20.0
16 x 20 x 2	HFA201620	6	12.0
16 x 25 x 2	HFA201625	6	14.0
20 x 20 x 2	HFA202020	6	14.0
20 x 25 x 2	HFA202025	6	17.0
24 x 24 x 2	HFA202424	6	18.0



TWO-STAGE PROGRESSIVE-DENSITY DESIGN

HF SERIES NOTES

SIZING INFORMATION

* What does Nominal mean? Standard size filters are of a nominal dimension. This means the height and width dimensions are undercut by a certain amount. See below for the exact amount of undercut for each dimension.

** Filter Thickness: 1/2" is exact, nominal 1" (actual 7/8") and nominal 2" (actual 1-3/4").

1. **Standard** nominal filters are 1/2" undercut on the height and width dimensions.
2. **Special size** filters are made to the exact height and width dimensions provided.
3. **Standard and Special** size filters are available in 1/2" exact, nominal 1" (7/8" actual) and nominal 2" (Actual 1-3/4").
4. Tolerance filter foam porosity: ± 5 ppi.
5. Tolerance height and width: ± 1/8"
6. Tolerance thickness: ± 1/32"

CLASSIFICATION AND TEST NOTES

1. UL Classified 900
2. Rated Airflow: 300 fpm
3. Recommended Airflow Range: 250 – 350 fpm.
4. Initial Efficiency: MERV 4 at rated airflow
5. Dust Holding Capacity:
 - a. 1" thick: 24 grams per square foot
6. Average Arrestance:
 - a. 1" thick: 75% at rated airflow
7. Recommended final resistance is .50" W.G.
8. Independent test report available for performance details

INSTALLATION CONSIDERATIONS

1. The HF Series filter may be installed in HVAC systems vertically or horizontally.
2. DO NOT place the filter in direct sunlight or ultraviolet light because this will degrade the filter foam.

ADDITIONAL INFORMATION

1. The 1/2" exact filter uses an .025" thick aluminum frame.
2. The 1/2" exact filter is 4-ply and contains 1/4" thick filter foam.
3. The nominal 1" (actual 7/8") filter is 4-ply and contains .025" thick 25 ppi filter foam.
4. The nominal 2" (actual 1-3/4") filter is 6-ply and contains 1/2" thick 25 ppi filter foam.

